

LEWISVILLE ISD

BOUNDARY ADJUSTMENTS

Board Work Session

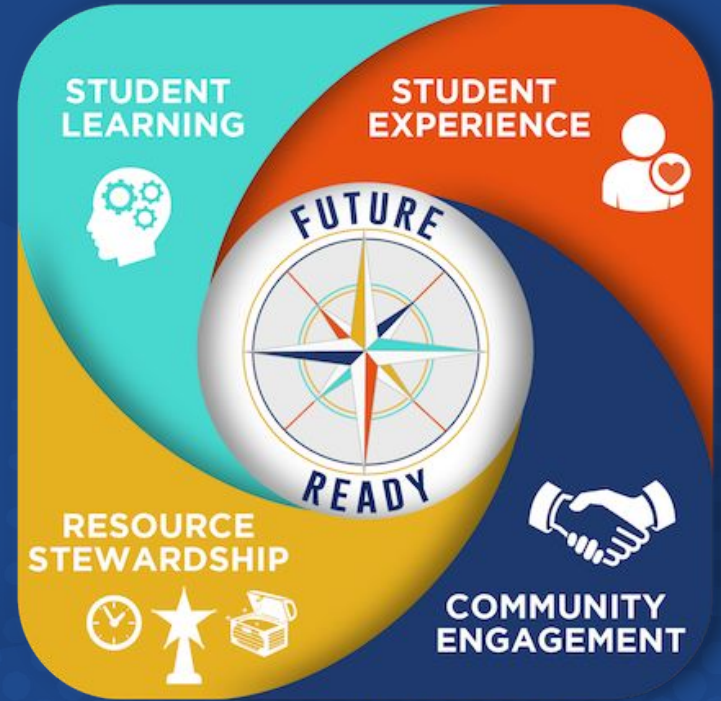
December 7, 2020



**REAL INNOVATION
LIMITLESS OPPORTUNITY**
LEWISVILLE INDEPENDENT SCHOOL DISTRICT

FOUR CORNERSTONES

- ❑ STUDENT LEARNING
- ❑ STUDENT EXPERIENCE
- ❑ COMMUNITY ENGAGEMENT
- ❑ RESOURCE STEWARDSHIP



REAL INNOVATION. LIMITLESS OPPORTUNITY.
LEWISVILLE INDEPENDENT SCHOOL DISTRICT

Overview

- Provide information on transportation, current programming, and future program considerations
- Present information for the following boundary adjustments:
 - Adjustment of subdivision HILLS OF KINGSWOOD attendance zone
 - Retiring of Stewarts Creek ES
 - New elementary school on Josey Lane
 - "Grandfathering" considerations

BOUNDARY ADJUSTMENTS



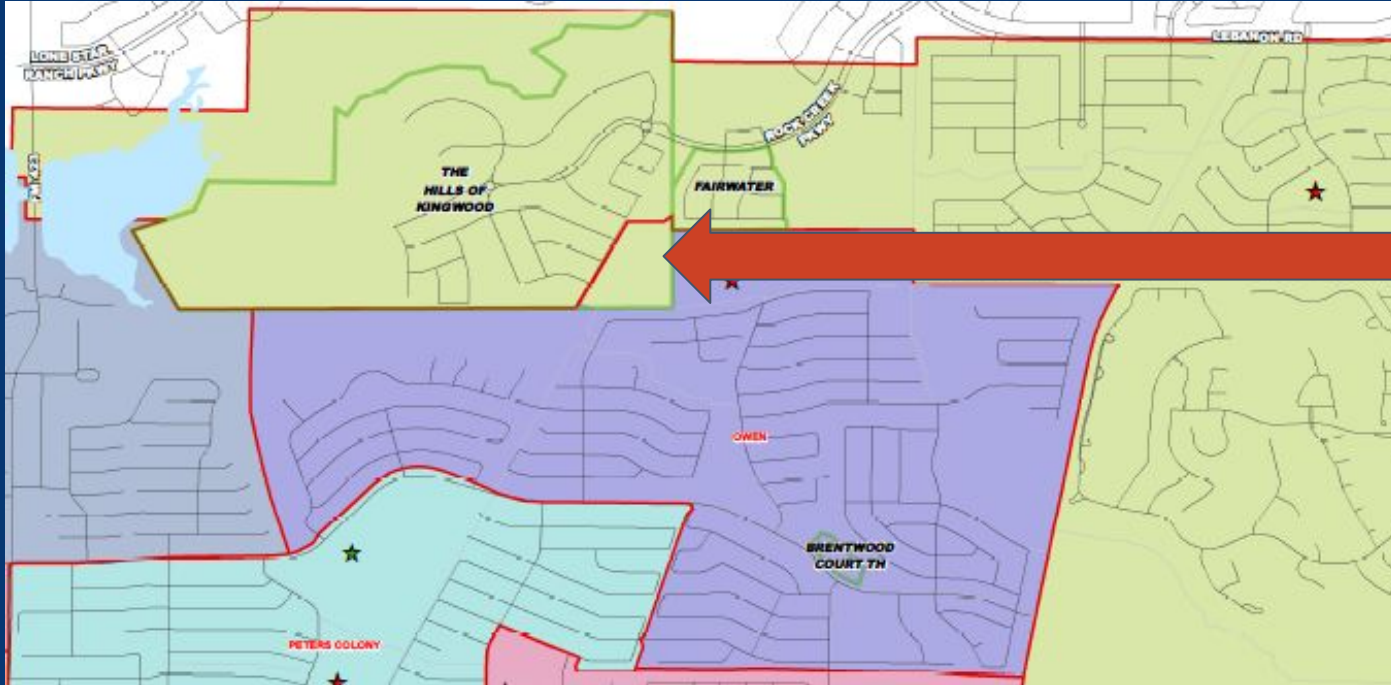
Hills of Kingswood

ADJUSTMENT OF ATTENDANCE ZONE FOR SUBDIVISION - Hills of Kingswood

- 1st - 3rd phase of development is zoned for Hicks Elementary.
- 4th phase of development is zoned for B.B. Owen Elementary.
- There is one entrance to the subdivision for all phases.

Recommendation is to adjust attendance zone for the Hills of Kingswood phase 4 from B.B. Owens to Hicks Elementary.

HILLS OF KINGSWOOD



AREA TO BE
CONSIDERED

HILLS OF KINGSWOOD



Zoned for HICKS

Zoned for OWENS

Hills
of
Kingswood

Phase 1

Phase 2

Phase 4

Phase 5

Trails

Stewart's Creek 
New ES on Josey Lane

WHY RETIRE STEWART'S CREEK ES?

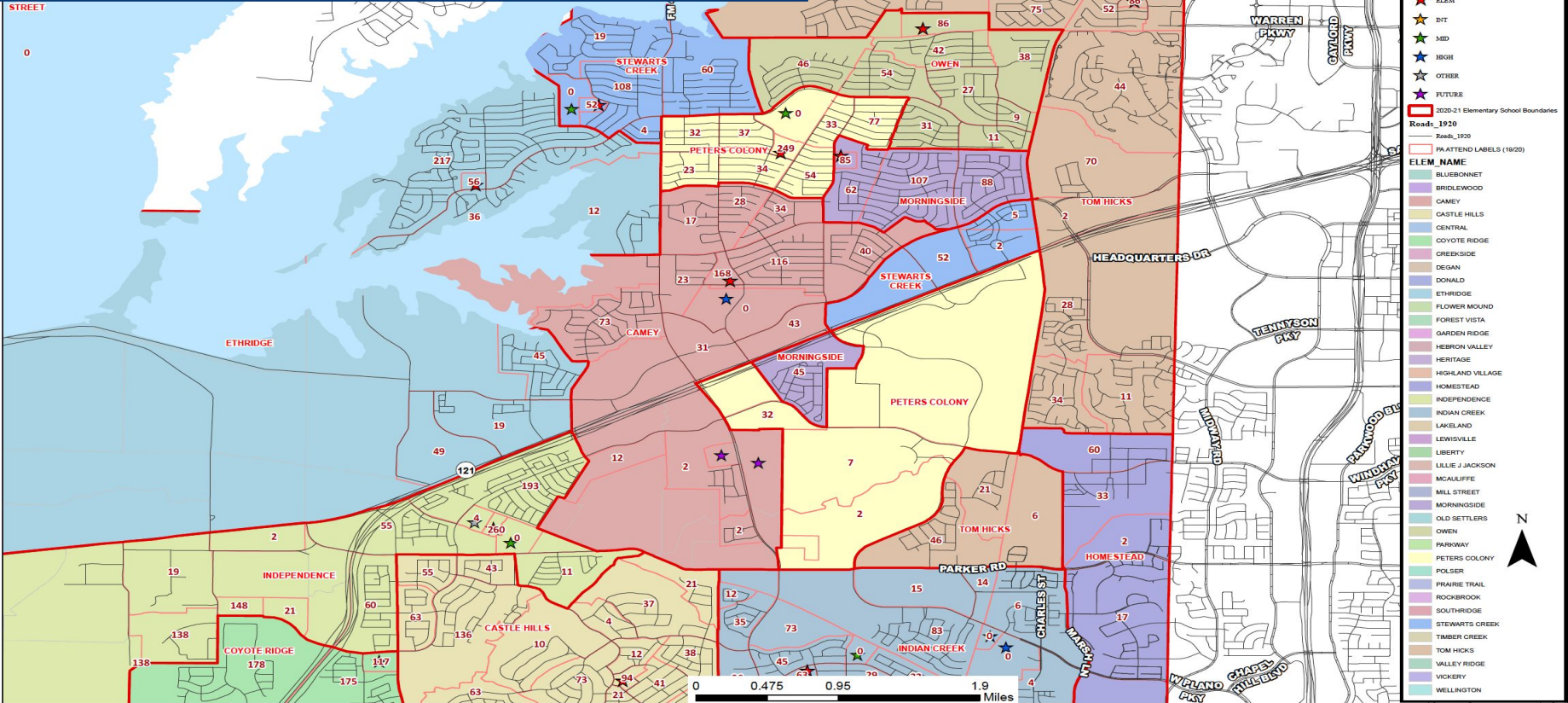
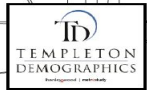
- Declining enrollment in neighborhood schools.

STEWART'S	CAPACITY	SCHOOL YEAR	2014	2015	2016	2017	2018	2019	2020	2020-2021	2022	2023	2024	2025
CREEK	495	ENROLLMENT	453	415	412	410	369	337	301	260	296	298	307	315

- Age of the Stewart's Creek building and resources needed to bring the building up to current standards.
- Growth of major roads, streets and tollways that create natural boundaries, i.e. "cleaning up" existing boundaries.
- Opening of new Elementary STEM campus for TCHS feeder on Josey Ln.

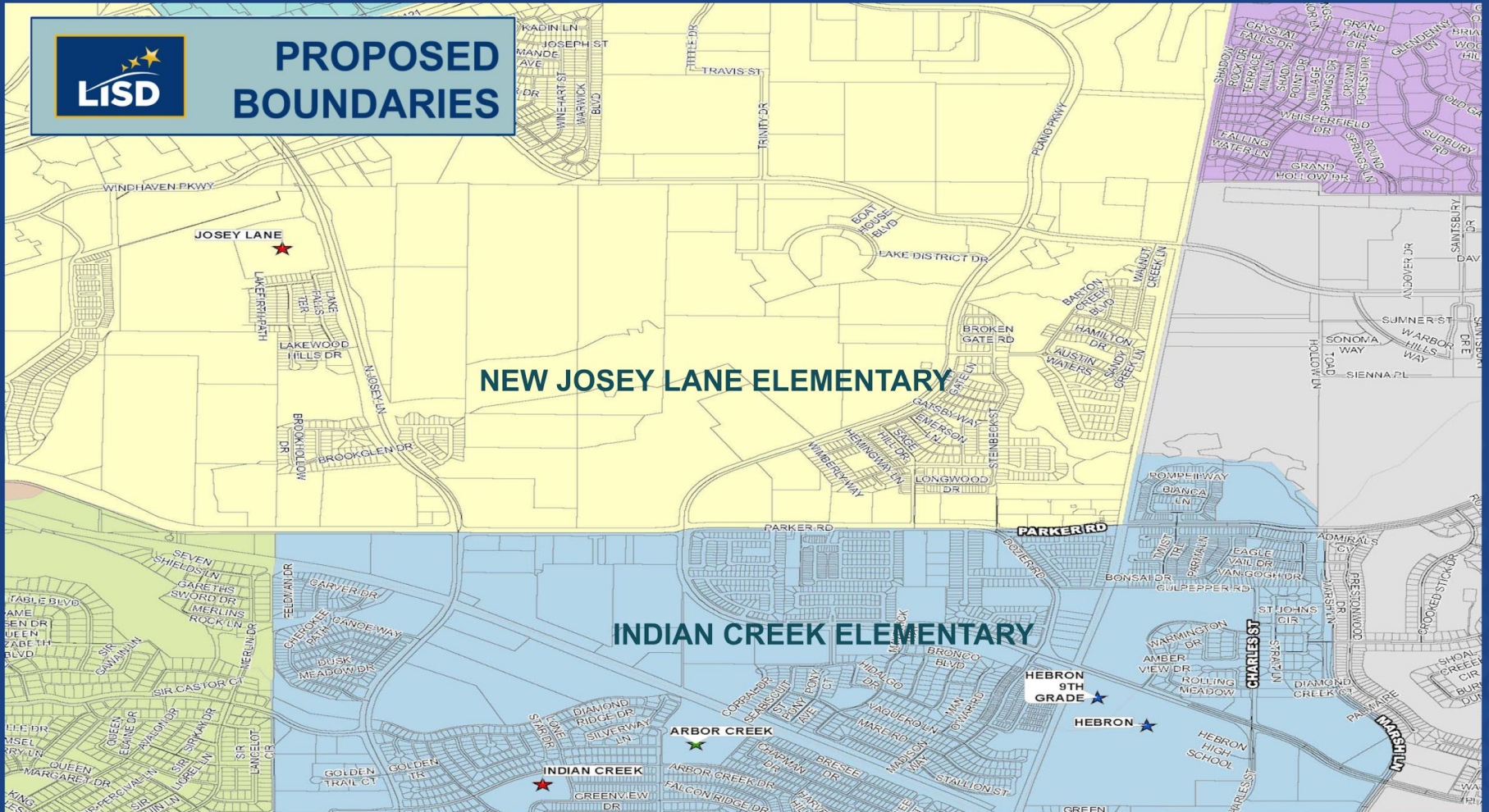


CURRENT BOUNDARIES





PROPOSED BOUNDARIES



ENROLLMENT PROJECTIONS

SCHOOL	Capacity	Current Enrollment	2021/22	2022/23
CAMEY	693	586	526	491
ETHRIDGE	455	410	398	394
New ES on JOSEY	754	N/A	375	457
MORNINGSIDE	470	342	421	420
BB OWEN	693	276	316	325
STEWART'S CREEK	495	260	N/A	N/A
PETERS COLONY	640	549	633	620
INDIAN CREEK	673	533	562	560
HICKS	713	643	587	602
ARBOR CREEK MIDDLE SCHOOL	945	866	859	856
LAKEVIEW MIDDLE SCHOOL	891	569	532	559
GRIFFIN MIDDLE SCHOOL	1,200	703	635	589
THE COLONY HIGH SCHOOL	2,989	2,038	2,046	1,914
HEBRON HIGH SCHOOL	3,208	2,790	2,765	2,814
HEBRON 9th	1,512	859	944	943

CURRENT PROGRAMING AT STEWART'S CREEK ELEMENTARY

- FLS/AVLS
- SDI SUPPORT
- PRE-K
- COMMUNITY IN SCHOOLS
- ESL SUPPORT
- ESD

TRANSPORTATION PROJECTIONS

- Students adjusted to the new Josey Lane / Indian Creek ES from the “Boot” and “Spur” area will receive bus transportation due to distance over 2 miles and hazardous routes.
- Students adjusted due to the retirement of Stewart’s Creek ES will receive bus service but it depends on distance from their residence to their new elementary school home.
- Preliminary research shows a possibility of adding 1 bus route due to the boundary adjustments.

FDB (LOCAL) - ADMISSIONS: INTRADISTRICT TRANSFERS AND CLASSROOM ASSIGNMENTS

CHANGES IN ATTENDANCE ZONE

When the Board approves changes to District attendance zone boundaries, students shall attend the schools specified; however, a student attending an elementary school and entering grades 4 or 5, or attending a middle school and entering grade 8, at the time of zone boundary changes shall be given the choice of attending the school to which he or she has been newly zoned or requesting a transfer to complete grade 5 or grade 8, respectively, at the original school. Siblings of a student wishing to stay at his or her original school, rather than move due to changes in attendance zone boundaries, shall be allowed to remain at the original school. If a student choosing to stay at the school has a sibling entering kindergarten, the sibling shall be guaranteed transfer to the school.

Consideration to add the following to FDB (LOCAL)

District transportation shall not be provided for such transfers.

NEXT STEPS

- Finalize the Q & A on the website from the community meetings
- Publish the presentations from the community meetings to the website
- Continue Community meetings
 - Dec. 9 at Griffin Middle School
 - Dec. 10 at TECC-East
- Bring FDB (LOCAL) forward for Action on January 11, 2020
- Bring boundary adjustments forward for Action on January 11, 2020
- Work with current Stewart's Creek staff and Employee Services to ensure employment positions for SY 21/22
- Reviewing Communities In Schools locations for continuing services for Stewart's Creek Elementary students.



QUESTIONS / COMMENTS?